



NSW SCHOOL
OF LANGUAGES

Learn locally. Communicate globally.

COURSE INFORMATION 2024



Education

35 West Street, Petersham NSW 2049

(02) 9381 4800

nswschoollang.school@det.nsw.edu.au

www.nswschoollang.school.nsw.edu.au



Dear SUPERVISORS AND STUDENTS,

NSW School of Languages is a distance education school run by the Department of Education that offers 12 languages for study from Years 9 to 12. The courses are taught in a blended model that includes online coursework (completed at home school) and a weekly speaking lesson (delivered online).

Whether you have some knowledge of the language you wish to study or are starting from the beginning, the benefits of language learning for your education and personal development will be long-lasting.

"The truth is, in today's increasingly interconnected and interdependent world, proficiency in other languages is a vital skill that gives you the opportunity to engage with the world in a more immediate and meaningful way—whether in your neighbourhood or thousands of miles away—while better preparing you to compete and succeed in the global economy." - leadwithlanguages.org

Enrolments are accepted for students in government and non-government schools. All our courses are accredited with NESA (NSW Education Standards Authority) and in Years 11 and 12 count towards the ATAR.

We hope you find the enclosed information useful. Please note our [website](#) has further information.

NSW School of Languages is on [Facebook](#) and [Instagram](#) and I encourage you to like, follow and share our page to stay up-to-date with news and events from our school.

Teresa Naso
Principal

About NSL



NSW School of Languages is a distance education Languages specialist school. We are part of a network of Department of Education schools that provide online Languages to students by distance education.

Subject to satisfying certain guidelines, students in NSW secondary and central schools may enrol to study a language course not available to them at their home school. Enrolment is available to Years 9-12 students from NSW public schools and other educational providers.

Learning is supported through a diverse program of engaging online courses, speaking lessons, and face-to-face lesson days at our campus in Petersham.

Face-to-face lesson days are held once per term and give students the opportunity to meet and learn with other students, whilst being immersed in the culture of the language of study.

The guidelines for enrolment may be viewed on our school [website](#). All applications for enrolments must be made by the home school on behalf of the student.



Our VISION

To develop successful, thriving learners with a love of languages, intercultural understanding and skills for their future.

Our MISSION

NSW School of Languages strives to lead the teaching and learning of languages through innovative quality language programs.

Our skilled and committed teachers work with the school community to ensure students reach their highest potential, broaden their global perspective and strengthen their connections with heritage and culture.





Our VALUES

Respect

Valuing oneself and others equally:

- I am polite, courteous, and friendly
- I respect different perspectives and opinions

Positivity

Demonstrating a positive attitude in all situations:

- I seek solutions and help to solve problems
- I endeavour to understand other people's perspectives

Collaboration

Working harmoniously together for a common purpose:

- I work well in a team and appreciate the input of others
- I work cooperatively to achieve a common goal

Commitment and responsibility

Consistent application of the highest standards to maximise outcomes:

- I am professional in all aspects of my work
- I work to the best of my ability and strive for excellence



Course LIST

CHINESE 中文

Stage 5

- 100 Hours
- 200 Hours

Stage 6

- Beginners
- Continuers*
- Extension+
- Chinese in Context^

EAL/D

Stage 6

- Available to students in regional and rural government secondary schools

FRENCH *Français*

Stage 5

- 100 Hours
- 200 Hours

Stage 6

- Beginners
- Continuers*
- Extension+

GERMAN *Deutsch*

Stage 5

- 100 Hours
- 200 Hours

Stage 6

- Beginners
- Continuers*
- Extension+

INDONESIAN *Bahasa Indonesia*

Stage 5

- 100 Hours
- 200 Hours

Stage 6

- Beginners
- Continuers*
- Indonesian and Literature^

ITALIAN *italiano***Stage 5**

- 100 Hours
- 200 Hours

Stage 6

- Beginners
- Continuers*
- Extension+

JAPANESE 日本語**Stage 5**

- 100 Hours
- 200 Hours

Stage 6

- Beginners
- Continuers
- Extension+
- Japanese in Context^

KOREAN 한국어**Stage 5**

- 100 Hours
- 200 Hours

Stage 6

- Beginners
- Continuers*
- Korean in Context^

LATIN *Lingua Latina***Stage 5**

- 100 Hours
- 200 Hours

Stage 6

- Continuers*

MODERN GREEK Ελληνικά**Stage 5**

- 100 Hours
- 200 Hours

Stage 6

- Beginners
- Continuers*
- Extension+

PORTUGUESE *Português***Stage 6**

- Continuers*

RUSSIAN *Русский***Stage 5**

- 100 Hours
- 200 Hours

Stage 6

- Continuers*

SPANISH *Español***Stage 5**

- 100 Hours
- 200 Hours

Stage 6

- Beginners
- Continuers*
- Extension+

KEY

* Stage 6 Continuers courses are only available to students who have completed the Stage 5 (200 Hours) course or have prior knowledge equivalent to the Stage 5 course.

+ Extension courses are only available to students in Stage 6 who are also studying the Continuers course in the same language at NSL or home school.

^ Stage 6 Language and Literature and Stage 6 Language In Context courses are designed for students with a cultural and linguistic background in the language of study.

Useful LINKS

Department of Education

- [A-Z Parents Guide](#)
- [NSW Student Learning Library](#)
- [Stay Healthy HSC](#)

NESA (NSW Education Standards Authority)

- [Stage 5 Languages](#)
- [Stage 6 Languages](#)
- [HSC Subject Selection Advice](#)

NSW School of Languages

- [About Our School](#)
- [Our Languages](#)
- [Supervisor Information and Resources](#)
- [Enrolment Information and Resources](#)
- [Past NSL Newsletters](#)

Not sure which course is right for you?

Use the flowcharts on the following pages to help you choose the right course. Please note - this is a guide only. Refer to the [NESA guidelines](#) or [contact us](#). Students are subject to an initial eligibility check by NSW School of Languages. Eligibility is monitored throughout students' studies.

Stage 5 100 OR 200 HOURS?

YEAR 9

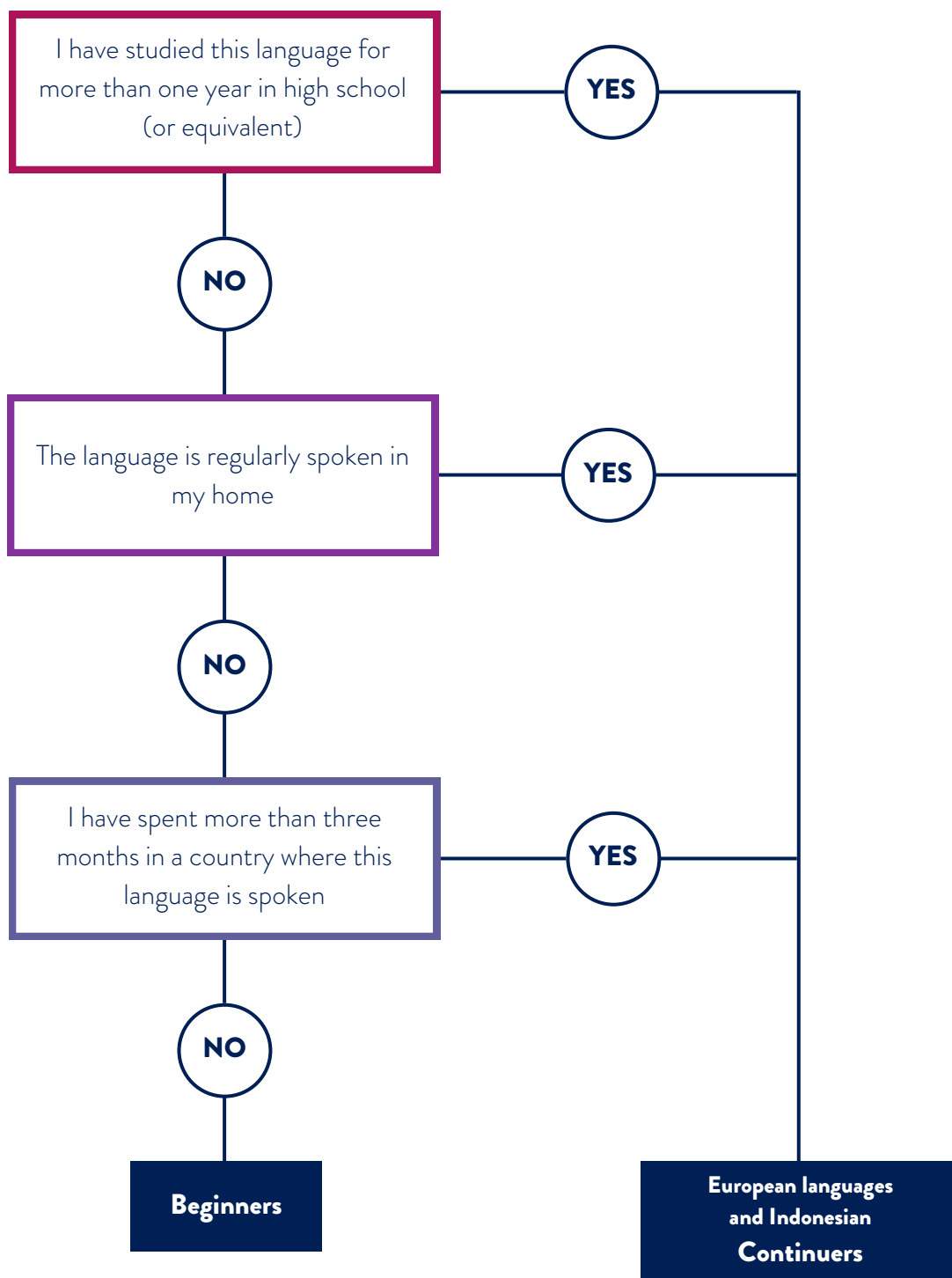
- Year 9 courses are two-year courses and are 200 hours across Years 9 and 10. If you choose not to continue the language course in Year 10, you will receive 100 hours on your RoSA for that course.

YEAR 10

- If you continue the course from Year 9 and complete Year 10, you will receive 200 hours on your RoSA for that course.
- If you start a language course in Year 10 with no background or prior learning, you will complete the Year 10 100 hours course, which is equivalent to the Stage 5 Year 9 course. You will receive 100 hours on your RoSA.
- If you start a language course in Year 10 with background, you will complete the second year of the Stage 5 course Year 10 200 hours and will receive 100 hours on your RoSA.
- If you start a language course in Year 10 with prior learning, you will complete the second year of the Stage 5 course Year 10 200 hours and will receive 200 hours on your RoSA.

Stage 6

BEGINNERS OR CONTINUERS?

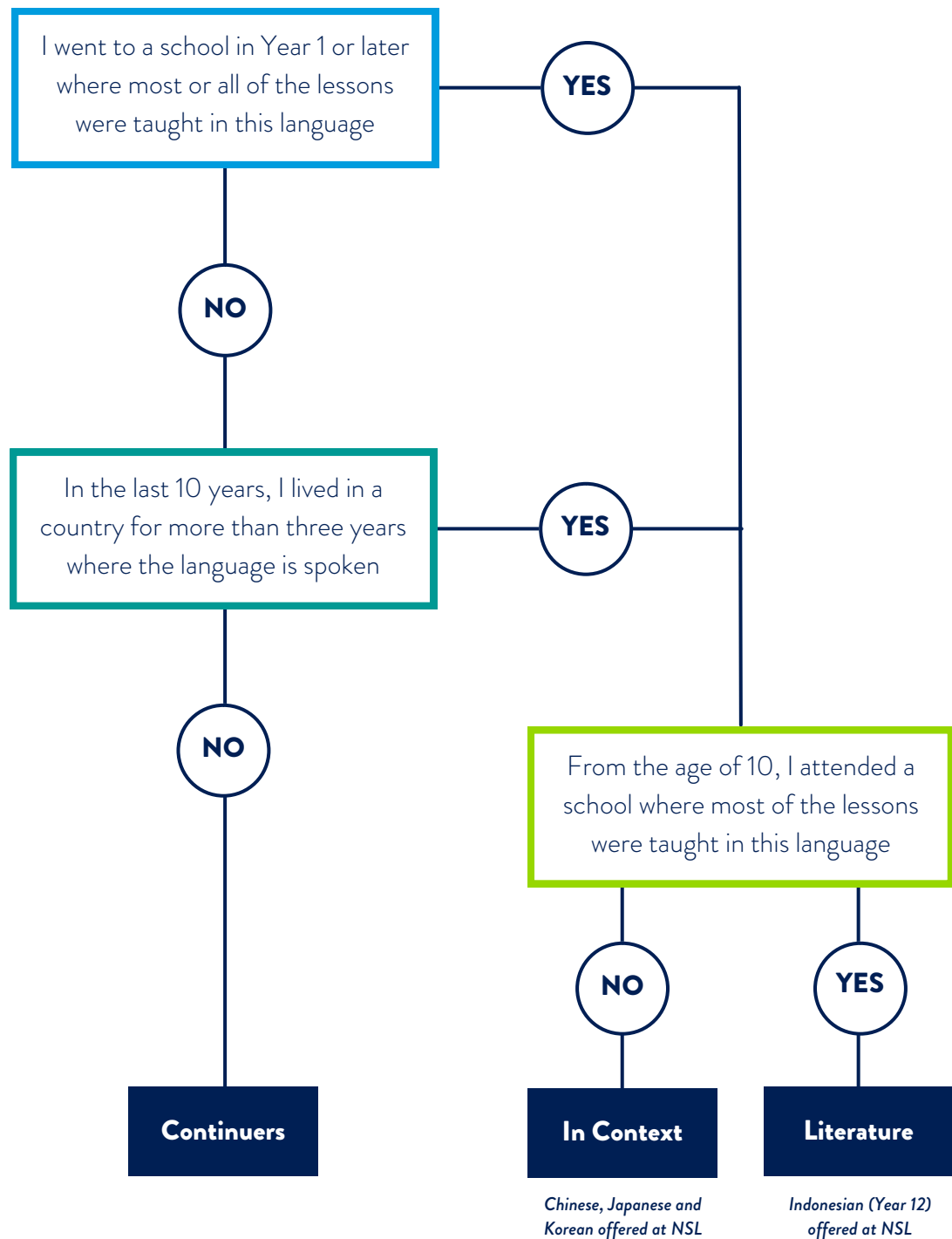


WHICH COURSE IS RIGHT FOR ME?

For Chinese, Japanese and Korean at a level other than Beginners, please now complete the Continuers, in Context for Chinese, Japanese and Korean flowchart on the next page.

Stage 6

CONTINUERS, IN CONTEXT OR LITERATURE FOR CHINESE, JAPANESE AND KOREAN?





STAGE 5

Our exciting Chinese courses offer highly engaging learning experiences with a wide variety of activities.

Supported by our knowledgeable teachers, students work through activities on our eLearning platform and are encouraged to develop their communication skills and cultural understanding through engagement with Chinese-speaking communities and Chinese language media.

Our face-to-face lesson days each term provide students with a unique opportunity to participate in and learn through a range of vibrant cultural activities including cooking, crafting activities, and music. Your unique Chinese learning journey starts here!

STAGE 6

Years 11 and 12 students have the opportunity to undertake Chinese Beginners, Continuers, Extension, and In Context courses under the close guidance of our expert teaching staff. Our innovative learning activities enhance students' ability to communicate in Chinese and to understand and appreciate the many diverse cultural contexts in which Chinese is used.

Various forms of media such as; songs, video clips, and articles, are used to immerse students in the language. Our once-a-term face-to-face lesson days further immerse students in both the language and culture, as they are provided with the opportunity to participate in cultural activities and interact with both their peers and teachers in Chinese.



STAGE 5

Our dynamic and exciting French courses in Years 9 and 10 offer a highly engaging learning experience with effective and innovative activities. Supported by our knowledgeable and passionate teachers, students work through activities on our eLearning platform and are encouraged to develop their communication skills and cultural understanding through engagement with French-speaking communities and French language media.

Our face-to-face lesson days each term provide students with a unique opportunity to participate in and learn through a range of vibrant cultural activities including cooking and music. Your unique French learning journey at NSW School of Languages starts here!

STAGE 6

Don't leave school without a second language! Before embarking on further study and the world of work, consider learning or extending your French. At NSW School of Languages, Years 11 and 12 students are offered the opportunity to undertake French Beginners, Continuers, and Extension courses under the expert guidance of our experienced and creative teaching staff.

Our integrated and innovative learning activities enhance students' ability to communicate in French and to understand and appreciate the diverse cultural contexts in which French is used. Language is studied through authentic texts and media such as songs, literature, technology, and art. Students are provided with the opportunity to interact and practise their language skills in our engaging and enjoyable face-to-face lessons. Your amazing French language journey awaits you!



STAGE 5

The Year 9 and 10 courses cater to all students with or without any prior knowledge of German. These courses offer not only a solid linguistic foundation: learning core vocabulary and grammatical structures, but they also provide opportunities for enrichment tasks, for students to have the opportunity to be creative.

Our dedicated German teachers will guide students through well-structured courses on our eLearning platform. Our courses offer engaging learning experiences which develop student communication skills and cultural understanding. Weekly personalised online speaking lessons are an integral part of the courses for students to develop their German speaking skills and to discuss the coursework with their teacher.

Our enjoyable face-to-face lesson days each term provide students with a great opportunity to meet their classmates and to learn through a range of fun group activities and cultural experiences.

STAGE 6

Year 11 and 12 students are offered the opportunity to undertake German Beginners, Continuers, and Extension courses under the expert guidance of our experienced German teachers. Through studying a range of authentic texts and accessing diverse media, students develop their ability to comprehend linguistic processes and structures and communicate in written and spoken German at a level appropriate to the German HSC Examinations. As students gain an appreciation for another mode of thinking and being, they are able to consider their place in the world and move forward with greater confidence.



STAGE 5

Years 9 and 10 students work through an interactive online course developed specifically for distance education. The 200-hour course is taught through interactive and engaging eLearning tasks, weekly speaking lessons, and face-to-face lesson days, enabling students to consolidate their learning through practical application.

A wide variety of audio and visual materials have been incorporated into our eLearning platform, bringing the Indonesian language and culture alive. Weekly speaking lessons with their teacher allow students to practise their skills and have any questions answered quickly, while face-to-face lesson days allow students to meet with their peers and teachers.

STAGE 6

At NSW School of Languages, Years 11 and 12 students are offered the opportunity to undertake Indonesian Beginners, Continuers, and Indonesian and Literature (Year 12 only) courses under the guidance of our experienced and creative teaching staff. Our integrated and innovative learning activities enhance students' ability to communicate in Indonesian and to understand and appreciate the many diverse cultural contexts in which Indonesian is used.

Language is studied through various text forms and media such as songs, technology, and video clips. Each week, students practise their language skills with their teacher in our enjoyable face-to-face lessons. Each term, students attend a study day. Our face-to-face lesson days give students the chance to be immersed in the language and culture, giving them the opportunity to practise and improve their abilities to communicate in Indonesian.



STAGE 5

Our energetic and passionate Italian faculty offers Years 9 and 10 students a highly engaging learning experience with effective and innovative activities. Supported by our knowledgeable and passionate teachers, students work through activities on our eLearning platform and are encouraged to develop their communication skills and cultural understanding.

Our face-to-face lessons each term provide students with a unique opportunity to participate in and learn through a range of vibrant cultural activities including cooking, art-making and more. Your wonderful Italian-learning journey at NSW School of Languages starts here!

STAGE 6

At NSW School of Languages, Years 11 and 12 students are offered the opportunity to undertake Italian Beginners, Continuers and Extension courses under the expert guidance of our experienced and creative teaching staff. Our integrated and innovative learning activities enhance students' ability to communicate in Italian and to understand and appreciate the many diverse cultural contexts in which Italian is used.

Language is studied through authentic texts and media such as songs, literature, technology and art, and students are provided with the opportunity to interact and practise their language skills in our engaging and enjoyable face-to-face lessons. Your amazing Italian-language journey awaits you!



STAGE 5

Welcome to the exciting world of Japanese language and culture! Our students have weekly speaking lessons and use an interactive eLearning platform to complete coursework online.

During our face-to-face lesson days, our students have the opportunity to create authentic Japanese arts and crafts to take home. Students participate in various learning activities such as writing by numbers and colours. They particularly enjoy our outdoor treasure hunts with clues written in Japanese. We often make popular Japanese food or order bento (lunch boxes) from a nearby Japanese restaurant.

Our students gain solid knowledge and confidence when speaking in Japanese, but above all, learning the Japanese language with us is enjoyable.

STAGE 6

Welcome to the exciting world of Japanese language and culture! Our one-on-one weekly speaking lessons are tuned to the needs of each student so that we can help develop their language and study skills.

During face-to-face lesson days, our students participate in various group activities that assist in boosting their confidence to speak in Japanese with others. Our students benefit from practising speaking with various Japanese teachers during the face-to-face lesson days and before the HSC Examination.

Every year we organise a day excursion so our students can attend a film viewing during the Japanese Film Festival. Learning Japanese with us is fun and provides students with a solid language foundation.



STAGE 5

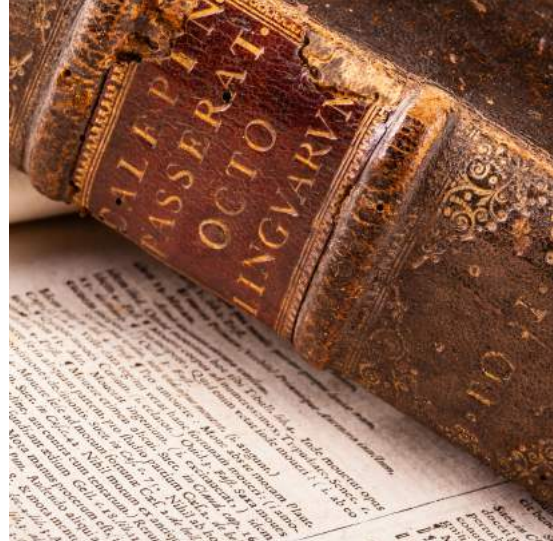
Our unique and fun Korean faculty offers Years 9 and 10 students a highly engaging learning experience with effective and innovative activities. Supported by our knowledgeable and passionate teachers, students work through activities on our eLearning platform and are encouraged to develop their communication skills and cultural understanding through engagement with Korean-speaking communities and Korean language media.

Our face-to-face lessons each term provide students with a unique opportunity to participate in and learn through a range of vibrant cultural activities including cooking, dancing, art-making, and more. Your extraordinary Korean language journey at NSW School of Languages begins here!

STAGE 6

At NSW School of Languages, Years 11 and 12 students are offered the opportunity to undertake Korean Beginners, Continuers and In-Context courses, under the expert guidance of our experienced and creative teaching staff. Our integrated and innovative learning activities enhance students' ability to communicate in Korean and to understand and appreciate the many diverse cultural contexts in which Korean is used.

Language is studied through authentic texts and media such as songs, literature, technology, and art, and students are provided with the opportunity to interact and practise their language skills in our engaging and enjoyable face-to-face lessons. Your extraordinary Korean language journey awaits you!



STAGE 5

Latin provides a particular challenge for students who enjoy something different and intellectually challenging. The study of Latin develops critical and analytical thinking and trains the mind in the understanding and analysis of language and literature.

Year 9 and 10 courses in Latin are based on the Oxford Latin Course, a course particularly suited for distance education. Students will access the courses via the NSW School of Languages eLearning platform.

Regular contact with their teacher allows students to develop their understanding of the Latin language as well as gives them immediate feedback and support in their learning. Students have an opportunity to learn about the language and the culture of Roman civilization.

STAGE 6

In Years 11 and 12 students study the Latin Continuers course. In the HSC course, students get an opportunity to read two of the most remarkable and sophisticated works in world literature. Through these books, students access a very rich and extraordinarily influential culture that has had an enormous impact on Western history and literature. Above all, studying Latin is fun and rewarding!



STAGE 5

Our experienced and passionate teachers introduce learners of Years 9 and 10 to the wonders and charms of one of the world's oldest languages. Like Greek itself, we change with the times, continually improving our curriculum and approach, augmented with a rich eLearning platform, audio/video resources, animated games, and more!

During our face-to-face lessons each term we practise pronunciation, speaking, listening, reading, writing, grammar, and vocabulary via a creative and interactive methodology and through a range of vibrant cultural activities including cooking, music, and even dancing.

Modern Greek has been classified as one of the twelve priority languages of wider use in Australia and is taught in all states and territories in a variety of systems and levels of education. Be part of this exciting exploration!

STAGE 6

Years 11 and 12 students are offered the opportunity to undertake Modern Greek Beginners, Continuers and Extension courses under the guidance of our experienced teachers. Several of our teachers have experience in developing, marking and assessing external exams such as the HSC, both the written and oral components, passing on invaluable experience, knowledge and skills to their students.

All of our courses incorporate eLearning pedagogy to engage language learners with collaborative and authentic tasks that challenge and stimulate our students.

Our face-to-face lesson days involve learning activities that encourage students to interact with their teachers and develop the four skills of language learning: speaking, listening, reading, and writing. Our aim is for students to enjoy the courses while learning to communicate and understand and appreciate a language steeped in history and tradition.



STAGE 6

Our dynamic and exciting Portuguese faculty offers Years 11 and 12 Continuers students an engaging learning experience. Supported by our qualified, knowledgeable, and passionate teachers, students work through activities on our eLearning platform and are encouraged to develop and maintain their communication skills and cultural understanding through engagement with Portuguese-speaking communities and Portuguese language media.

Portuguese at NSW School of Languages provides students with a unique opportunity to further develop language skills and cultural awareness through the in-depth study of a range of relevant and engaging topics. Students are challenged to develop and demonstrate the knowledge, skills, and understanding needed to express their ideas and opinions at increasingly complex levels.

Our face-to-face lessons each term include activities such as excerpts of movies with discussions, dancing, and revision of grammatical points, revised whenever requested by our students, along with multimedia presentations and games, designed to enhance student learning.

Additionally, our courses do not intend to be contrastive, however, we do contrast the Portuguese spoken in Brazil and Portugal where relevant.



STAGE 5

Our Russian teachers will guide students through our engaging courses on the eLearning platform. The courses contain a variety of interactive learning activities which cater for all levels of knowledge. While learning Russian, students develop their communication skills and improve their cultural understanding. Weekly speaking lessons are an integral part of the courses - they allow students to develop Russian speaking skills and discuss the coursework with the teacher. Our enjoyable face-to-face lessons each term provide students with a great opportunity to meet their classmates and to learn through a range of fun, group activities and cultural experiences.

The Year 9 and 10 courses cater for all students, with or without any prior knowledge of Russian. In Years 9 and 10 students learn how to write in Russian, acquire core vocabulary and grammatical structures, and also enjoy some opportunities to be creative while working on enrichment tasks.

STAGE 6

Years 11 and 12 students can study the Russian Continuers course. This course is designed for students who have studied Russian in Years 9 and 10 or for those who have prior or background knowledge of Russian. A range of authentic texts and media help students develop their Russian language skills for the HSC Examination.



STAGE 5

Our dynamic and exciting Spanish department offers Years 9 and 10 students a highly engaging learning experience with effective and innovative activities. Supported by our knowledgeable and passionate teachers, students work through activities on our eLearning platform and are encouraged to develop their communication skills and cultural understanding through engagement with Spanish-speaking communities and Spanish language media.

Our face-to-face lessons each term provide students with a unique opportunity to participate in and learn through a range of vibrant cultural activities including cooking, dancing, art-making, and more. Your extraordinary Spanish-learning journey at NSW School of Languages starts here!

STAGE 6

At NSW School of Languages, Years 11 and 12 students are offered the opportunity to undertake Spanish Beginners, Continuers and Extension courses under the expert guidance of our experienced and creative teaching staff. Our integrated and innovative learning activities enhance students' ability to communicate in Spanish and to understand and appreciate the many diverse cultural contexts in which Spanish is used.

Language is studied through authentic texts and media such as songs, literature, technology, and art, and students are provided with the opportunity to interact and practise their language skills in our engaging and enjoyable face-to-face lessons. Your amazing Spanish language journey awaits you!

Key enrolment dates for **CURRENT STUDENTS**

31 JULY - 6 AUGUST 2023

Intention to Continue email sent to current Year 11 students

22 SEPTEMBER 2023

Closing date for Intention to Continue

13 OCTOBER 2023

Closing date for Extension Expression of Interest

Key enrolment dates for **NEW STUDENTS**

20 JULY 2023

2024 Enrolment Application forms available on our website

20 JULY 2023

Enrolment Application forms will be accepted by NSL from today via email

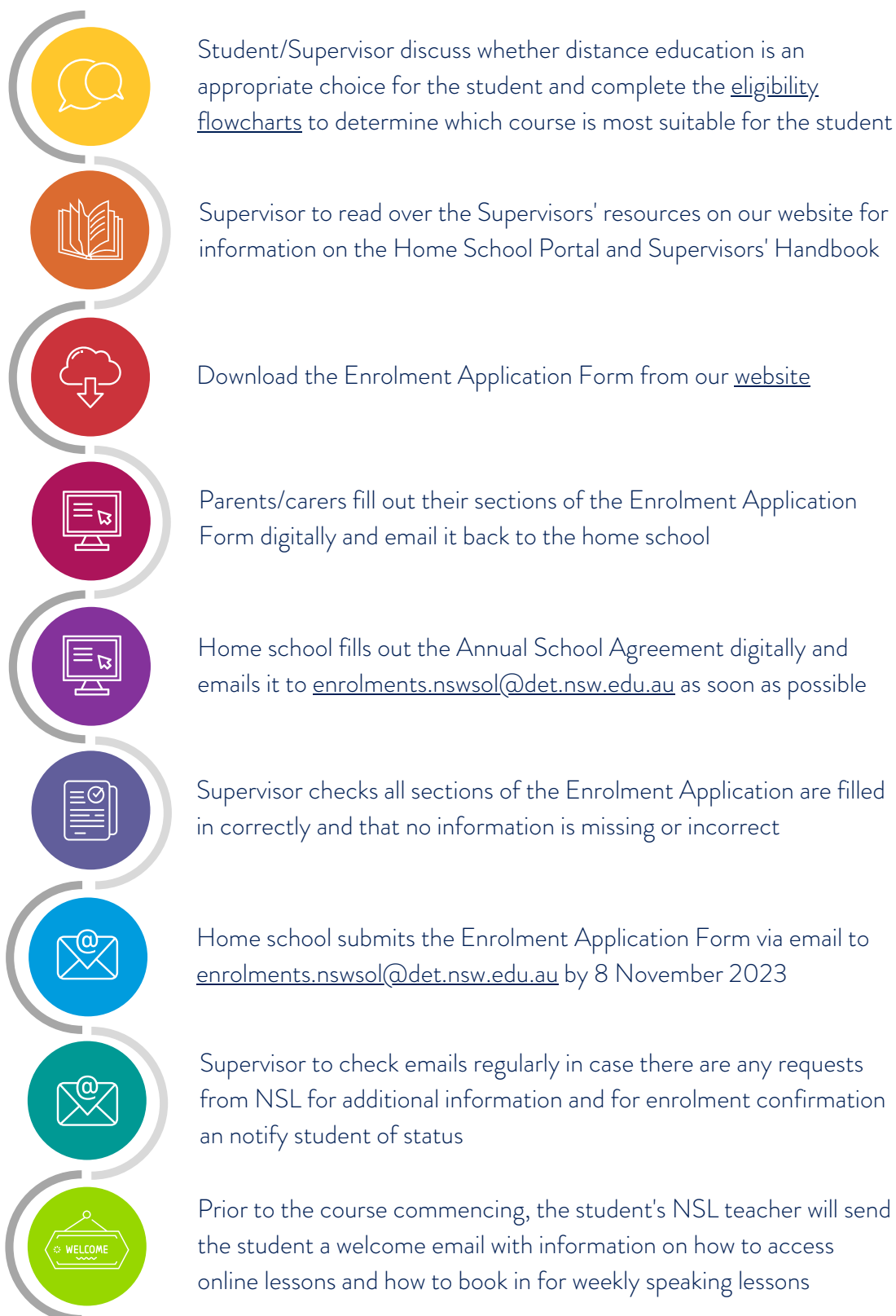
8 NOVEMBER 2023

Closing date for new enrolments

14 FEBRUARY 2024

Closing date for late enrolments - any enrolments received from the 15 February 2024 onwards must have approval from the Director

Enrolment PROCESS



Additional **INFORMATION**

CAMPUS AND LOCATION

Our campus is located in Petersham in Sydney's inner west, on the site of the original Petersham Public School and Petersham Girls' High School. In more recent years, the site was used by TAFE NSW as their Petersham campus.

Our campus features the original 1878 school buildings, as well as newer additions, and recently underwent a large-scale renovation prior to NSW School of Languages moving to the site in 2018.

Our teaching and administration staff have dedicated faculty areas and each language has its own dedicated classroom. We have several specialist rooms, including a video recording studio, sound recording studio and a classroom kitchen.

We are situated within 5 minutes walking distance between Petersham and Lewisham train stations, with many bus stops close by as well. We do not have onsite parking for parents/carers and students, however, there is ample street parking around our school. Entry into our campus is via either the West Street or Gordon Street pedestrian gates.

FACE-TO-FACE LESSON DAYS

Face-to-face lesson days generally occur once per course, per school term and are held at our campus. All students are encouraged to attend, however, this may not be possible for out-of-metro area students.

Face-to-face lesson days allow students to come together and meet their peers and teachers for an immersive and enjoyable full day of language learning and other cultural activities.

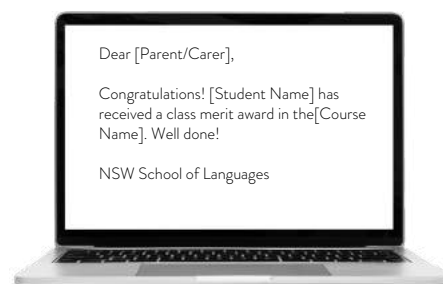
We do not have a canteen on-site, so students must bring their own snacks, lunch and water bottles. On occasion, lunch will be organised for a whole class group and will be pre-arranged and ordered in advance with the NSL teachers running the face-to-face lesson day.

Student AWARD SYSTEM

RECEIVING MERITS

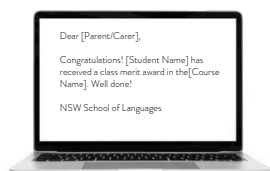
Students earn a Merit for a variety of positive actions including;

- Outstanding effort
- Application
- Improvement
- Commitment
- Lesson day effort
- Course work submission
- Assessment result
- Independent learning skills



Teachers enter a Merit on our school database (DEMS) and a notification is automatically sent to parents/carers.

MERIT SYSTEM



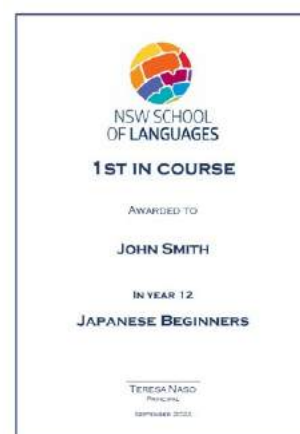
.....→
Ten Merits earns the student a Principal's Award that is printed and sent to the student via the home school at the end of Terms 2, 3 and 4.



1ST, 2ND AND 3RD PLACE IN COURSE AWARDS

These awards are produced at the end of the school year (September for Year 12 and December for Years 9-11) and posted to home schools to be presented during the students' home school assemblies, presentation or awards ceremonies.

1st, 2nd and 3rd in Course awards are awarded in recognition of academic excellence to students who achieve the top mark in the class (based on total marks for the year).





NSW SCHOOL OF LANGUAGES

Learn locally. Communicate globally.

*Do you have further questions?
Contact us today and our friendly staff will happily assist.*

35 West Street, Petersham NSW 2049
(02) 9381 4800

nswschoollang.school@det.nsw.edu.au

www.nswschoollang.school.nsw.edu.au

